





# SUMMARY OF HOUSING OPTIONS

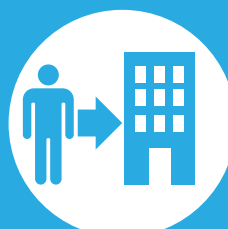
## UTI - Canton, MI Campus

COLLEGIATE HOUSING SERVICES <b>HOUSING</b> FEATURES & OPTIONS	<b>SHARED</b> HOUSING PROGRAM	<b>REFERRAL</b> HOUSING PROGRAM
Apartment Rent	✓ Included in monthly CHS housing payment.	✓ Included Paid directly to apartment community.
Utilities	✓ Included with monthly utility allowance that varies by floorplan.	✗ Not Included
Furniture	✓ Included	✗ Not Included
 Individual Lease Protection	✓ Included	✗ Not Included
 Roommate Coordination	✓ Included	✗ Not Included
 Transferability	✓ Included	✗ Not Included
 Early Lease Cancellation	✓ Included w/notice & 2 month rent cancellation fee.	✗ Not Included
Resident Life Programming	✓ Included	✗ Not Included
Resident Assistants (RAs)	✓ Included	✗ Not Included
Shared & Private Bedrooms	✓ Included Mostly shared bedrooms, fewer private bedroom options.	✓ Included Per apartment regulations.
Overnight Guests Allowed	✗ Not Included Unless 21+ Age Unit.	✓ Included
Co-Ed Allowed	✗ Not Included	✓ Included
Families Allowed	✗ Not Included	✓ Included
Pets Allowed	✗ Not Included	Varies Per apartment regulations.



### SHARED HOUSING PROGRAM

Learn more at:  
[sharedhousing.info](https://sharedhousing.info)



### REFERRAL HOUSING PROGRAM

Learn more at  
[referralhousing.info](https://referralhousing.info)



## APPLY FOR HOUSING



**APPLY ONLINE:**  
<https://bit.ly/uti-can>



## HOUSING DETAILS & PRICING

### Lease Type

### Financial Liability

### Age

### Credit Qualification

### Inspections

### Rules & Regulations

### Lease Length

### Application Fee

### Service Fee

### Deposits

### Rental Rate Lock

## SHARED HOUSING PROGRAM

### Individual Student Lease

Lease Holder: CHS

### Roommates Individually

Each resident is on a separate lease.

### 18 & Over

Under 18 w/parent co-sign.

### CHS Standard

Minimal credit qualifications.  
VA benefits considered as income.

### Routine

Quarterly, or as needed per request.

### College Housing

Consistent w/college programs.

### Compliments School Term

Short term leases/renewals that accommodate graduation dates may be subject to nominal rate adjustment.

### \$50

Non-refundable fee.

### \$180

Payment locks monthly housing rate.  
Refundable until 30 days before move-in.

### \$0 in most cases

\$200 if needed based on co-signer credit or employment.

### Rate is locked upon payment of service fee for resident's original lease term.

## Shared Program Pricing Below Is Per Bedroom Type

### Includes Shared Living Space, Basic Furniture, & Utility Allowance.

Shared student housing is provided in 2-bedroom apartments with 2-4 occupants and 3-bedroom apartments with 3-6 occupants, depending on availability. There are no private bathrooms.

**Budget Price Group:** This may be an older apartment, typically smaller square footage with 1 bath. Amenities generally include A/C, dishwasher, and onsite laundry facilities.

**Basic Price Group:** A mix of amenities and square footage. Some older and some newer communities with varying amenities. Kitchens usually equipped with dishwashers; on-site laundry, A/C, & patio/balcony.

**Moderate Price Group:** Typically, a better mix of amenities and square footage for the price. May be newer communities with nice amenities package. Modern kitchens usually equipped w/dishwashers, on-site laundry, A/C, patio/balcony, & pool.

**Premium Price Group:** Tend to be higher end or newer properties with complete amenities package and larger floorplans. Almost all have modern kitchens equipped with dishwashers & some with built-in microwaves, on-site laundry, A/C, larger closets, patio/balcony, pool, sports courts & more.

**Premium PLUS Price Group:** Tend to be newer community, close proximity to the school. Modern kitchens; central air, patio/balcony

### Shared Bedroom

## \$739

Monthly Rate Per Student



### Shared Bedroom

## \$759

Monthly Rate Per Student

### Private Bedroom

## \$1,099

Monthly Rate Per Student

### Shared Bedroom

## \$809

Monthly Rate Per Student

### Private Bedroom

## \$1,129

Monthly Rate Per Student

### Shared Bedroom

## \$859

Monthly Rate Per Student

### Private Bedroom

## \$1,179

Monthly Rate Per Student

### Shared Bedroom

## \$889

Monthly Rate Per Student

### Private Bedroom

## \$1,279

Monthly Rate Per Student

Garages are available at many CHS communities with limited availability. Prices vary by community. Please call us for details. CHS will use its best effort to accommodate all students; however, applications submitted within 30 days of requested move-in dates may be wait-listed until housing can be prepared. Preferences are considered on a first come, first served basis. Placement and/or options in specific communities cannot be guaranteed, as new properties may be substituted to ensure housing availability and their pricing may vary. Shared housing move-ins occurring on the 21<sup>st</sup> of the month or after require a prorated rental amount to be paid at move-in & the first full month's housing payment. Applications are subject to basic credit and criminal background checks. Additional background checks may apply for certain properties.

## REFERRAL HOUSING PROGRAM

### Joint & Several Lease

Lease Holder: Apt. Community

### Roommates Collectively

All residents on one lease.

### Varies

Per apartment regulations.

### Varies

Typically, monthly income from local employer that equals 3 to 5 times rent.

### As Needed

Per apartment's request.

### Varies

Consistent w/ apt. standards.

### Varies

Typical lease term is 12 months.

### Varies

Per apartment regulations.

### Varies

Per apartment regulations.

### Varies

Usually 1 mo. rent w/good credit.

### Varies

Per apartment availability.

## Referral Housing requires more responsibility on your part.

It's up to you to set up your utilities, keep them active, and cover the monthly bills.

It's up to you to furnish your apartment, including shared spaces and bedrooms.

Each resident is responsible for ensuring their entire apartment rent is paid in full and on time, even if a roommate moves out or comes up short.

Your CHS representative can provide full details on Referral Housing options, current pricing and walk you through the key items to consider.

### STUDENT HOUSING INFORMATION FOR:



CANTON, MI

### APPLY TODAY!

1-800-866-8346

RATES GOOD FROM 1/1/26 THRU 3/31/26



# Universal Technical Institute Canton

