



# SUMMARY OF HOUSING OPTIONS

## Ohio Technical College



COLLEGIATE  
HOUSING  
SERVICES

### HOUSING FEATURES & OPTIONS

### SHARED HOUSING PROGRAM

### REFERRAL HOUSING PROGRAM

Apartment Rent

✓ Included  
in monthly CHS housing payment.

✓ Included  
Paid directly to apartment community.

Utilities

✓ Included  
with monthly utility allowance that varies by floorplan.

✗ Not Included

Furniture

✓ Included

✗ Not Included



Individual Lease Protection

✓ Included

✗ Not Included



Roommate Coordination

✓ Included

✗ Not Included



Transferability

✓ Included

✗ Not Included



Early Lease Cancellation

✓ Included  
w/notice & 2 month cancellation fee.

✗ Not Included

Resident Life Programming

✓ Included

✗ Not Included

Resident Assistants (RAs)

✓ Included

✗ Not Included

Shared & Private Bedrooms

✓ Included  
Mostly shared bedrooms, fewer private bedroom options.

✓ Included  
Per apartment regulations.

Overnight Guests Allowed

✗ Not Included  
Unless 21+ Age Unit.

✓ Included

Co-Ed Allowed

✗ Not Included

✓ Included

Families Allowed

✗ Not Included

✓ Included

Pets Allowed

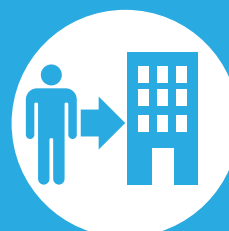
✗ Not Included

Varies  
Per apartment regulations.



### SHARED HOUSING PROGRAM

Learn more at:  
[sharedhousing.info](http://sharedhousing.info)



### REFERRAL HOUSING PROGRAM

Learn more at:  
[referralhousing.info](http://referralhousing.info)



## APPLY FOR HOUSING

APPLY ONLINE:

[housingservices.com/otc/cleveland-oh/](http://housingservices.com/otc/cleveland-oh/)



COLLEGIATE  
HOUSING  
SERVICES

## HOUSING DETAILS & PRICING

### Lease Type

### Financial Liability

### Age

### Credit Qualification

### Inspections

### Rules & Regulations

### Lease Length

### Application Fee

### Service Fee

### Deposits

### Rental Rate Lock

## SHARED HOUSING PROGRAM

### Individual Student Lease

Lease Holder: CHS

### Roommates Individually

Each resident is on a separate lease.

### 18 & Over

Under 18 w/parent co-sign.

### CHS Standard

Minimal credit qualifications.  
VA benefits considered as income.

### Routine

Quarterly, or as needed per request.

### College Housing

Consistent w/college programs.

### Compliments School Term

Short term leases/renewals that accommodate graduation dates may be subject to nominal rate adjustment.

### \$50

Non-refundable fee.

### \$200

Payment locks monthly housing rate.  
Refundable until 30 days before move-in.

### \$250

If needed based on credit and co-signer.  
Refundable upon successful completion of lease.

Rate is locked upon payment of service fee for resident's original lease term.

## Shared Program Pricing Below Is Per Bedroom Type

**Includes Shared Living Space, Basic Furniture, & Utility Allowance.**

Shared student housing is provided in 2-bedroom apartments with 2-4 occupants and 3-bedroom apartments with 3-6 occupants, depending on availability. There are no private bathrooms.

**Basic Price Group:** A mix of amenities and square footage. Some older and some newer communities with varying amenities. Kitchens usually equipped with dishwashers; on-site laundry, A/C, & patio/balcony.

**Moderate Price Group:** Typically, a better mix of amenities and square footage for the price. May be newer communities with nice amenities package. Modern kitchens usually equipped w/dishwashers, on-site laundry, A/C, patio/balcony, & pool.

### Shared Bedroom

**\$679**

Monthly Rate Per Student

### Private Bedroom

**\$999**

Monthly Rate Per Student

### Shared Bedroom

**\$699**

Monthly Rate Per Student

### Private Bedroom

**\$1,119**

Monthly Rate Per Student

**Garages are available at many CHS communities with limited availability. Prices vary by community. Please call us for details.** CHS will use its best effort to accommodate all students; however, applications submitted within 30 days of requested move-in dates may be wait-listed until housing can be prepared. Preferences are considered on a first come, first served basis. Placement and/or options in specific communities cannot be guaranteed, as new properties may be substituted to ensure housing availability and their pricing may vary. Shared housing move-ins occurring on the 21<sup>st</sup> of the month or after require a prorated rental amount to be paid at move-in & the first full month's housing payment. Applications are subject to basic credit and criminal background checks. Additional background checks may apply for certain properties.

## REFERRAL HOUSING PROGRAM

### Joint & Several Lease

Lease Holder: Apt. Community

### Roommates Collectively

All residents on one lease.

### Varies

Per apartment regulations.

### Varies

Typically, monthly income from local employer that equals 3 to 5 times rent.

### As Needed

Per apartment's request.

### Varies

Consistent w/ apt. standards.

### Varies

Typical lease term is 12 months.

### Varies

Per apartment regulations.

### Varies

Per apartment regulations.

### Varies

Usually 1 mo. rent w/good credit.

### Varies

Per apartment availability.

## Referral Housing requires more responsibility on your part.

It's up to you to set up your utilities, keep them active, and cover the monthly bills.

It's up to you to furnish your apartment, including shared spaces and bedrooms.

Each resident is responsible for ensuring their entire apartment rent is paid in full and on time, even if a roommate moves out or comes up short.

Your CHS representative can provide full details on Referral Housing options, current pricing and walk you through the key items to consider.

### STUDENT HOUSING INFORMATION FOR:



OHIO  
TECHNICAL  
COLLEGE

### APPLY TODAY!

1-800-866-8346

RATES GOOD FROM 1/1/26 THRU 3/31/26



The map displays the Cleveland area with various neighborhoods labeled. Callout boxes provide specific information for several locations:

- The Hamlets:** Fox Run Dr, Willoughby, OH 44094, 19.9 miles from campus, MODERATE-SHARED ONLY.
- OHIO TECHNICAL COL...:** 1374 E 51st St, Cleveland, OH 44103, 13.5 miles to campus, MODERATE-SHARED ONLY.
- Terra Parma Heights:** 6410 Stumph Rd, Cleveland, OH 44130, 13.5 miles to campus, MODERATE-SHARED ONLY.
- Midtown Towers:** 5676 Broadview Rd, Cleveland, OH 44134, BASIC-SHARED, MODERATE-PRIVATE.
- North Church Towers:** 9235 N Church Dr, Cleveland, OH 44130, MODERATE-SHARED/PRIVATE.
- Regency Towers:** 6841 Day Dr, Cleveland, OH 44129, 17.2 miles to campus, BASIC-SHARED/PRIVATE.