




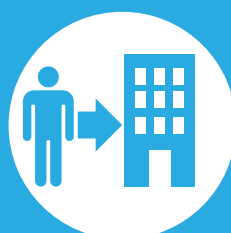


SUMMARY OF HOUSING OPTIONS

Illinois Aviation Academy - West Chicago, IL Campus

 COLLEGIATE HOUSING SERVICES HOUSING FEATURES & OPTIONS	SHARED HOUSING PROGRAM	REFERRAL HOUSING PROGRAM
Apartment Rent	✓ Included in monthly CHS housing payment.	✓ Included Paid directly to apartment community.
Utilities	✓ Included with monthly utility allowance that varies by floor plan.	✗ Not Included
Furniture	✓ Included	✗ Not Included
 Individual Lease Protection	✓ Included	✗ Not Included
 Roommate Coordination	✓ Included	✗ Not Included
 Transferability	✓ Included	✗ Not Included
 Early Lease Cancellation	✓ Included w/notice & 2 month rent cancellation fee.	✗ Not Included
Resident Life Programming	✓ Included	✗ Not Included
Resident Assistants (RAs)	✓ Included	✗ Not Included
Shared & Private Bedrooms	✓ Included Mostly shared bedrooms, fewer private bedroom options.	✓ Included Per apartment regulations.
Overnight Guests Allowed	✗ Not Included Unless 21+ Age Unit.	✓ Included
Co-Ed Allowed	✗ Not Included	✓ Included
Families Allowed	✗ Not Included	✓ Included
Pets Allowed	✗ Not Included	Varies Per apartment regulations.

SHARED
HOUSING PROGRAMLearn more at:
sharedhousing.infoREFERRAL
HOUSING PROGRAMLearn more at
referralhousing.infoAPPLY
FOR HOUSINGAPPLY ONLINE:
housingservices.com/sca/iaa/west-chicago/



HOUSING DETAILS & PRICING

Lease Type

Financial Liability

Age

Credit Qualification

Inspections

Rules & Regulations

Lease Length

Application Fee

Service Fee

Deposits

Rental Rate Lock

SHARED HOUSING PROGRAM

Individual Student Lease

Lease Holder: CHS

Roommates Individually

Each resident is on a separate lease.

18 & Over

Under 18 w/parent co-sign.

CHS Standard

Minimal credit qualifications.
VA benefits considered as income.

Routine

Quarterly, or as needed per request.

College Housing

Consistent w/college programs.

Compliments School Term

Short term leases/renewals that accommodate graduation dates may be subject to nominal rate adjustment.

\$50

Non-refundable fee.

\$200

Payment locks monthly housing rate.
Refundable until 30 days before move-in.

\$0 in most cases

\$250 if needed based on co-signer credit or employment.

Rate is locked upon payment of service fee for resident's original lease term.

Shared Program Pricing Below Is Per Bedroom Type

Includes Shared Living Space, Basic Furniture, & Utility Allowance.

Shared student housing is provided in 2-bedroom apartments with 2-4 occupants and 3-bedroom apartments with 3-6 occupants, depending on availability. There are no private bathrooms.

Basic Price Group: A mix of amenities and square footage. Some older and some newer communities with varying amenities. Kitchens usually equipped with dishwashers; on-site laundry, A/C, & patio/balcony.

Shared Bedroom

\$799

Monthly Rate Per Student

Private Bedroom

\$999

Monthly Rate Per Student

Moderate Price Group: Typically, a better mix of amenities and square footage for the price. May be newer communities with nice amenities package. Modern kitchens usually equipped w/dishwashers, on-site laundry, A/C, patio/balcony, & pool.

Shared Bedroom

\$1,039

Monthly Rate Per Student

Private Bedroom

\$1,009

Monthly Rate Per Student

Premium Price Group: Tend to be higher end or newer properties with complete amenities package and larger floorplans. Almost all have modern kitchens equipped with dishwashers & some with built-in microwaves, on-site laundry, A/C, larger closets, patio/balcony, pool, sports courts & more.

Shared Bedroom

\$1,109

Monthly Rate Per Student

Private Bedroom

\$1,209

Monthly Rate Per Student

Garages are available at many CHS communities with limited availability. Prices vary by community. Please call us for details. CHS will use its best effort to accommodate all students; however, applications submitted within 30 days of requested move-in dates may be wait-listed until housing can be prepared. Preferences are considered on a first come, first served basis. Placement and/or options in specific communities cannot be guaranteed, as new properties may be substituted to ensure housing availability and their pricing may vary. Shared housing move-ins occurring on the 21st of the month or after require a prorated rental amount to be paid at move-in & the first full month's housing payment. Applications are subject to basic credit and criminal background checks. Additional background checks may apply for certain properties.

REFERRAL HOUSING PROGRAM

Joint & Several Lease

Lease Holder: Apt. Community

Roommates Collectively

All residents on one lease.

Varies

Per apartment regulations.

Varies

Typically, monthly income from local employer that equals 3 to 5 times rent.

As Needed

Per apartment's request.

Varies

Consistent w/ apt. standards.

Varies

Typical lease term is 12 months.

Varies

Per apartment regulations.

Varies

Per apartment regulations.

Varies

Usually 1 mo. rent w/good credit.

Varies

Per apartment availability.

Referral Housing requires more responsibility on your part.

It's up to you to set up your utilities, keep them active, and cover the monthly bills.

It's up to you to furnish your apartment, including shared spaces and bedrooms.

Each resident is responsible for ensuring their entire apartment rent is paid in full and on time, even if a roommate moves out or comes up short.

Your CHS representative can provide full details on Referral Housing options, current pricing and walk you through the key items to consider.

STUDENT HOUSING INFORMATION FOR:

ILLINOIS AVIATION

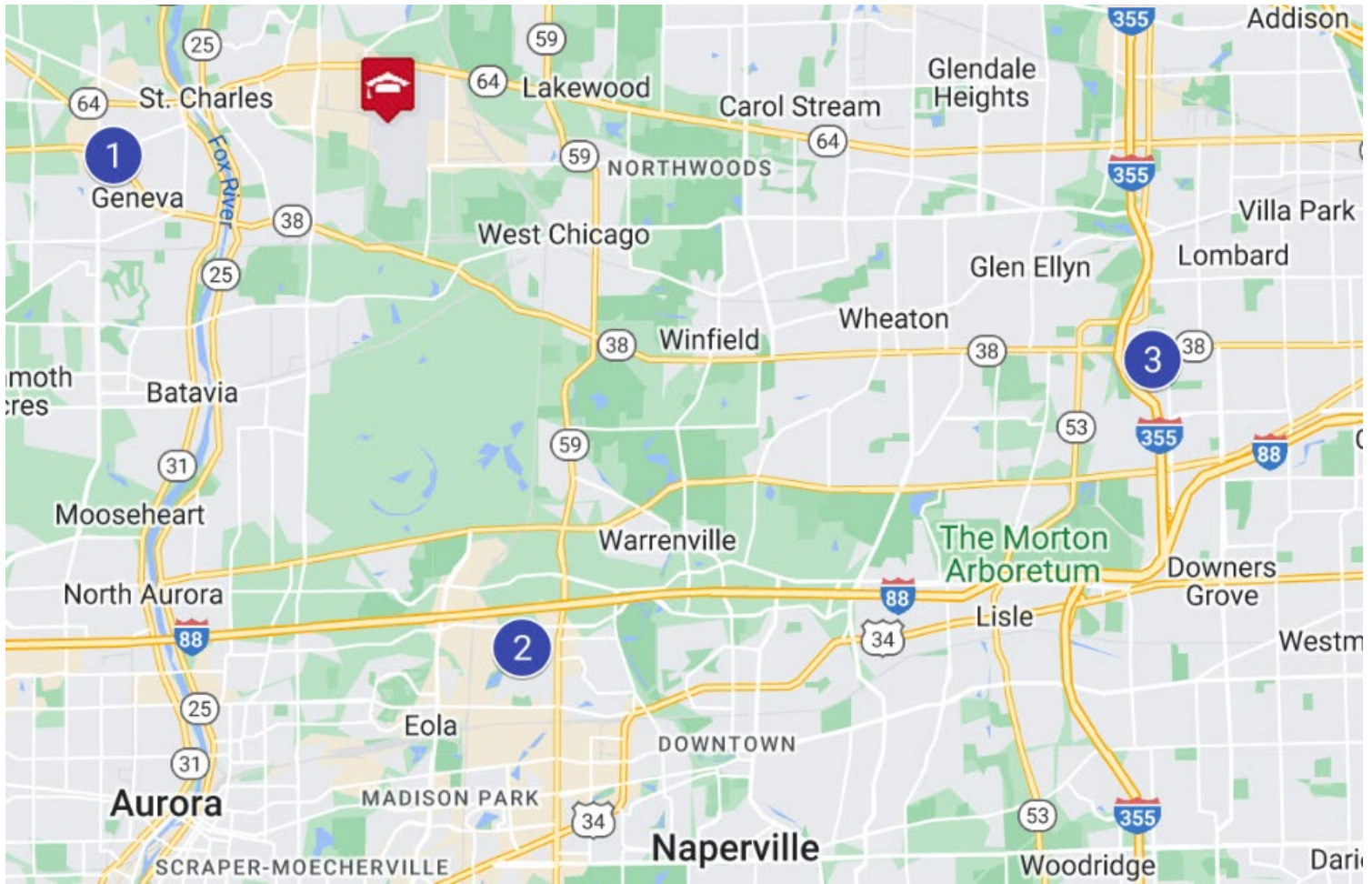
WEST CHICAGO, IL

APPLY TODAY!

1-800-866-8346

RATES GOOD FROM 1/1/26 THRU 3/31/26





CHS Property Map for Illinois Aviation Academy

	Apartment Community	Pricing Group	Distance to Campus
1	The Reserve at Prairie Creek	Premium-Shared	6.7 miles
2	Fifteen 98	Basic: Shared Premium: Private	11 miles
3	International Village	Moderate - Shared	16.2 miles



ILLINOIS AVIATION