




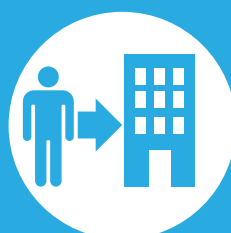


SUMMARY OF HOUSING OPTIONS KEISER UNIVERSITY - SARASOTA CAMPUS

 COLLEGIATE HOUSING SERVICES HOUSING FEATURES & OPTIONS	SHARED HOUSING PROGRAM	REFERRAL HOUSING PROGRAM
Apartment Rent	✓ Included in monthly CHS housing payment.	✓ Included Paid directly to apartment community.
Utilities	✓ Included with monthly utility allowance that varies by floor plan.	✗ Not Included
Furniture	✓ Included	✗ Not Included
 Individual Lease Protection	✓ Included	✗ Not Included
 Roommate Coordination	✓ Included	✗ Not Included
 Transferability	✓ Included	✗ Not Included
 Early Lease Cancellation	✓ Included w/notice & 2 month rent cancellation fee.	✗ Not Included
Resident Life Programming	✓ Included	✗ Not Included
Resident Assistants (RAs)	✓ Included	✗ Not Included
Shared & Private Bedrooms	✓ Included Mostly shared bedrooms, fewer private bedroom options.	✓ Included Per apartment regulations.
Overnight Guests Allowed	✗ Not Included Unless 21+ Age Unit.	✓ Included
Co-Ed Allowed	✗ Not Included	✓ Included
Families Allowed	✗ Not Included	✓ Included
Pets Allowed	✗ Not Included	Varies Per apartment regulations.



SHARED
HOUSING PROGRAM
Learn more at:
sharedhousing.info






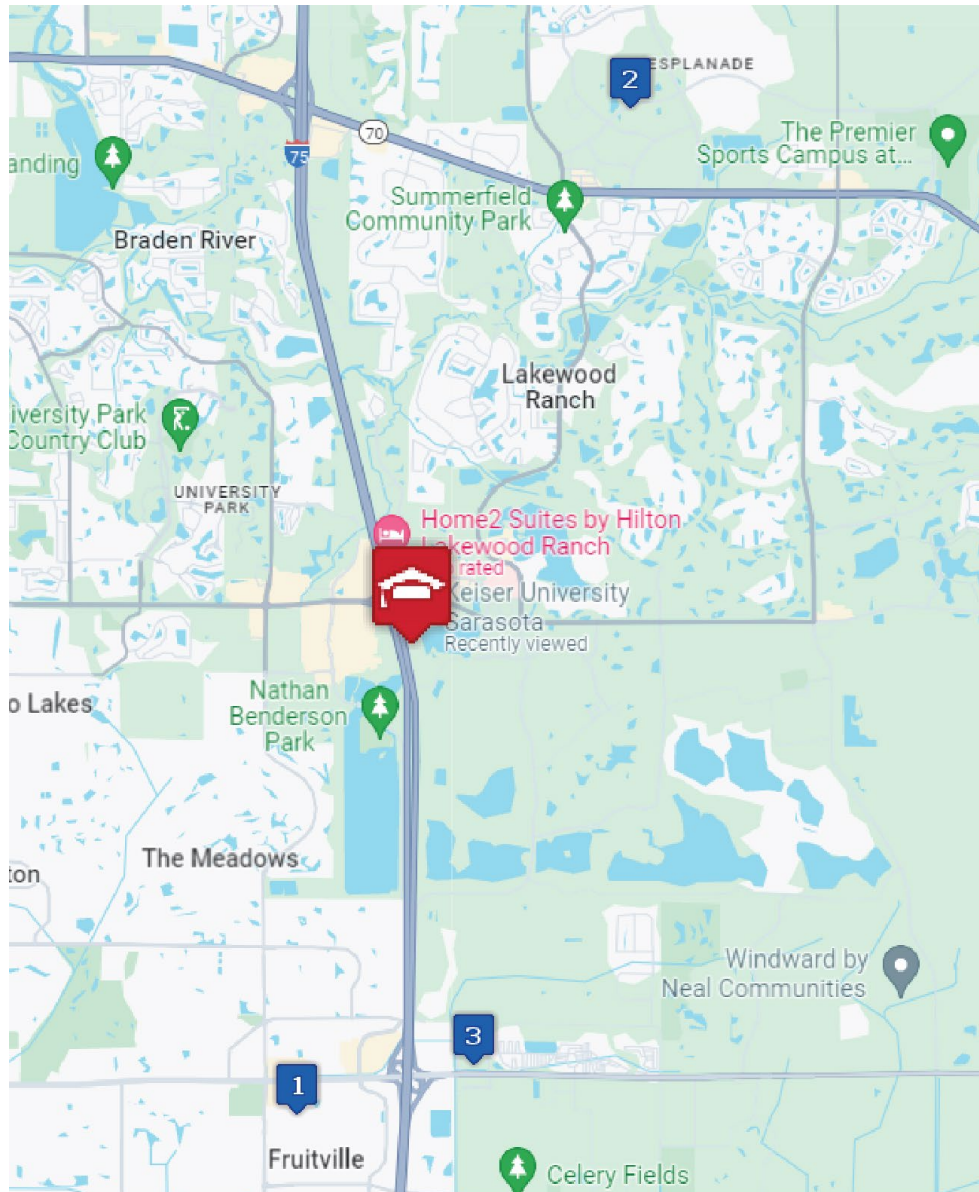
REFERRAL
HOUSING PROGRAM
Learn more at
referralhousing.info



APPLY
FOR HOUSING

APPLY ONLINE:
housing-services.com/keiser/sar

 COLLEGIATE HOUSING SERVICES HOUSING DETAILS & PRICING	SHARED HOUSING PROGRAM	REFERRAL HOUSING PROGRAM
Lease Type	Individual Student Lease Lease Holder: CHS	Joint & Several Lease Lease Holder: Apt. Community
Financial Liability	Roommates Individually Each resident is on a separate lease.	Roommates Collectively All residents on one lease.
Age	18 & Over Under 18 w/parent co-sign.	Varies Per apartment regulations.
Credit Qualification	CHS Standard Minimal credit qualifications. VA benefits	Varies Typically, monthly income from local employer that equals 3 to 5 times rent.
Inspections	Routine Quarterly, or as needed per request.	As Needed Per apartment's request.
Rules & Regulations	College Housing Consistent w/Keiser University's Code of Conduct.	Varies Consistent w/ apt. standards.
Lease Length	Compliments Academic School Year	Varies Typical lease term is 12 months.
Application Fee	\$50 Non-refundable fee.	Varies Per apartment regulations.
Service Fee	\$200 Payment locks monthly housing rate. Refundable until 30 days	Varies Per apartment regulations.
Deposits	\$250 If needed based on credit or co-signer.	Varies Usually 1 mo. rent w/good credit.
Rental Rate Lock	Rate is locked upon payment of service .	Varies Per apartment availability.
Pricing Below Is Per Bedroom Type – Shared Program Pricing Includes Shared Living Space, Basic Furniture, & a Utility Allowance.		
 COLLEGIATE HOUSING SERVICES		Average Price For Area Apartments In Referral Housing Program Listed Below:
		\$1,996 Average Price 1 Bedroom Apartment Without Utilities.
Moderate Price Group: Typically, a better mix of amenities and square footage for the price. May be newer communities with nice amenities package. Modern kitchens usually equipped w/dishwashers, on-site laundry, patio/balcony, & pool. A/C included.	<u>Shared Bedroom</u> \$1,099 Monthly Rate Per Student	<u>Private Bedroom</u> \$2,149 Monthly Rate Per Student
Premium Price Group: Tend to be higher end or newer properties with complete amenities package and larger floor plans. Almost all have modern kitchens equipped with dishwashers & some with built-in microwaves, on-site laundry, A/C, larger closets, patio/balcony, pool, sports courts & more.	<u>Shared Bedroom</u> \$1,129 Monthly Rate Per Student	<u>Private Bedroom</u> \$2,199 Monthly Rate Per Student
CHS will use its best effort to accommodate all students; however, applications submitted within 30 days of requested move-in dates may be wait-listed until housing can be prepared. Preferences are considered on a first come, first served basis. Placement and/or options in specific communities cannot be guaranteed, as new properties may be substituted to ensure housing availability and their pricing may vary. Move-ins occurring on the 21 st of the month or after require a prorated rental amount to be paid at move-in & the first full month's housing payment. Applications are subject to basic credit and criminal background checks.		STUDENT HOUSING INFORMATION FOR:  APPLY TODAY! 1-800-866-8346 RATES GOOD FROM 4/1/25 THRU 6/30/25



CHS Property Map for Keiser University – Sarasota Campus

	Apartment Community	Pricing Group	Distance to Campus
1	50 Paramount	Moderate: Shared Premium/Basic: Private	5.2 miles
2	Renata at Lakewood Ranch	Moderate: Shared Moderate/Basic: Private	5.8 miles
3	SOTA75	Moderate: Shared Basic: Private	5.4 miles



**COLLEGIATE
HOUSING
SERVICES**



**KEISER[®]
UNIVERSITY**