




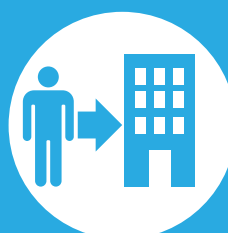


SUMMARY OF HOUSING OPTIONS

Illinois Aviation Academy - West Chicago, IL Campus

 COLLEGIATE HOUSING SERVICES HOUSING FEATURES & OPTIONS	SHARED HOUSING PROGRAM	REFERRAL HOUSING PROGRAM
Apartment Rent	✓ Included in monthly CHS housing payment.	✓ Included Paid directly to apartment community.
Utilities	✓ Included with monthly utility allowance that varies by floor plan.	✗ Not Included
Furniture	✓ Included	✗ Not Included
 Individual Lease Protection	✓ Included	✗ Not Included
 Roommate Coordination	✓ Included	✗ Not Included
 Transferability	✓ Included	✗ Not Included
 Early Lease Cancellation	✓ Included w/notice & 2 month rent cancellation fee.	✗ Not Included
Resident Life Programming	✓ Included	✗ Not Included
Resident Assistants (RAs)	✓ Included	✗ Not Included
Shared & Private Bedrooms	✓ Included Mostly shared bedrooms, fewer private bedroom options.	✓ Included Per apartment regulations.
Overnight Guests Allowed	✗ Not Included Unless 21+ Age Unit.	✓ Included
Co-Ed Allowed	✗ Not Included	✓ Included
Families Allowed	✗ Not Included	✓ Included
Pets Allowed	✗ Not Included	Varies Per apartment regulations.

**SHARED**
HOUSING PROGRAMLearn more at:
sharedhousing.info**REFERRAL**
HOUSING PROGRAMLearn more at
referralhousing.info**APPLY**
FOR HOUSING**APPLY ONLINE:**
housingservices.com/sca/iaa/west-chicago/



HOUSING DETAILS & PRICING

SHARED HOUSING PROGRAM

REFERRAL HOUSING PROGRAM

Lease Type	Individual Student Lease Lease Holder: CHS	Joint & Several Lease Lease Holder: Apt. Community
Financial Liability	Roommates Individually Each resident is on a separate lease.	Roommates Collectively All residents on one lease.
Age	18 & Over Under 18 w/parent co-sign.	Varies Per apartment regulations.
Credit Qualification	CHS Standard Credit qualifications apply. VA benefits considered as income.	Varies Typically, monthly income from local employer that equals 3 to 5 times rent.
Inspections	Routine Quarterly, or as needed per request.	As Needed Per apartment's request.
Rules & Regulations	College Housing Consistent w/college programs.	Varies Consistent w/ apt. standards.
Lease Length	Compliments School Term Short term leases/renewals that accommodate graduation dates may be subject to nominal rate adjustment.	Varies Typical lease term is 12 months.
Application Fee	\$50 Non-refundable fee.	Varies Per apartment regulations.
Service Fee	\$200 Payment locks monthly housing rate. Refundable until 30 days before move-in.	Varies Per apartment regulations.
Deposits	\$0 in most cases \$250 if needed based on credit history or employment.	Varies Usually 1 mo. rent w/good credit.
Rental Rate Lock	Rate is locked upon payment of service fee for resident's original lease term.	Varies Per apartment availability.

Pricing Below Is Per Bedroom Type – Shared Program Pricing Includes Shared Living Space, Basic Furniture, & Utility Allowance.

Shared student housing is provided in 2 bedroom apartments with 2-4 occupants and 3 bedroom apartments with 3-6 occupants, depending on availability. There are no private bathrooms.

Basic Price Group (Economy): A mix of amenities and square footage. Some older and some newer communities with varying amenities. Kitchens usually equipped with dishwashers; on-site laundry, A/C, & patio/balcony.	Shared Bedroom \$909 Monthly Rate Per Student	Private Bedroom \$1,559 Monthly Rate Per Student	Average Price For Area Apartments In Referral Housing Program Listed Below: \$1,835 Average Price 1 Bedroom Apartment Without Utilities.
Moderate Price Group (Intermediate): Typically, a better mix of amenities and square footage for the price. May be newer communities with nice amenities package. Modern kitchens usually equipped w/dishwashers, on-site laundry, A/C, patio/balcony, & pool.	Shared Bedroom \$1,009 Monthly Rate Per Student	Private Bedroom \$1,559 Monthly Rate Per Student	\$2,224 Average Price 2 Bedroom Apartment Without Utilities.
Premium Price Group: Tend to be higher end or newer properties with complete amenities package and larger floorplans. Almost all have modern kitchens equipped with dishwashers & some with built-in microwaves, on-site laundry, A/C, larger closets, patio/balcony, pool, sports courts & more.	Shared Bedroom \$1,069 Monthly Rate Per Student	Private Bedroom \$1,749 Monthly Rate Per Student	\$2,403 Average Price 3 Bedroom Apartment Without Utilities.

Garages are available at many CHS communities with limited availability. Prices vary by community. Please call us for details. CHS will use its best effort to accommodate all students; however, applications submitted CHS will use its best effort to accommodate all students; however, applications submitted within 30 days of requested move-in dates may be wait-listed until housing can be prepared. Preferences are considered on a first come, first served basis. Placement and/or options in specific communities cannot be guaranteed, as new properties may be substituted to ensure housing availability and their pricing may vary. Move-ins occurring on the 21st of the month or after require a prorated rental amount to be paid at move-in & the first full month's housing payment. Applications are subject to basic credit and criminal background checks. Additional background checks may apply for certain properties.

STUDENT HOUSING INFORMATION FOR:

ILLINOIS AVIATION

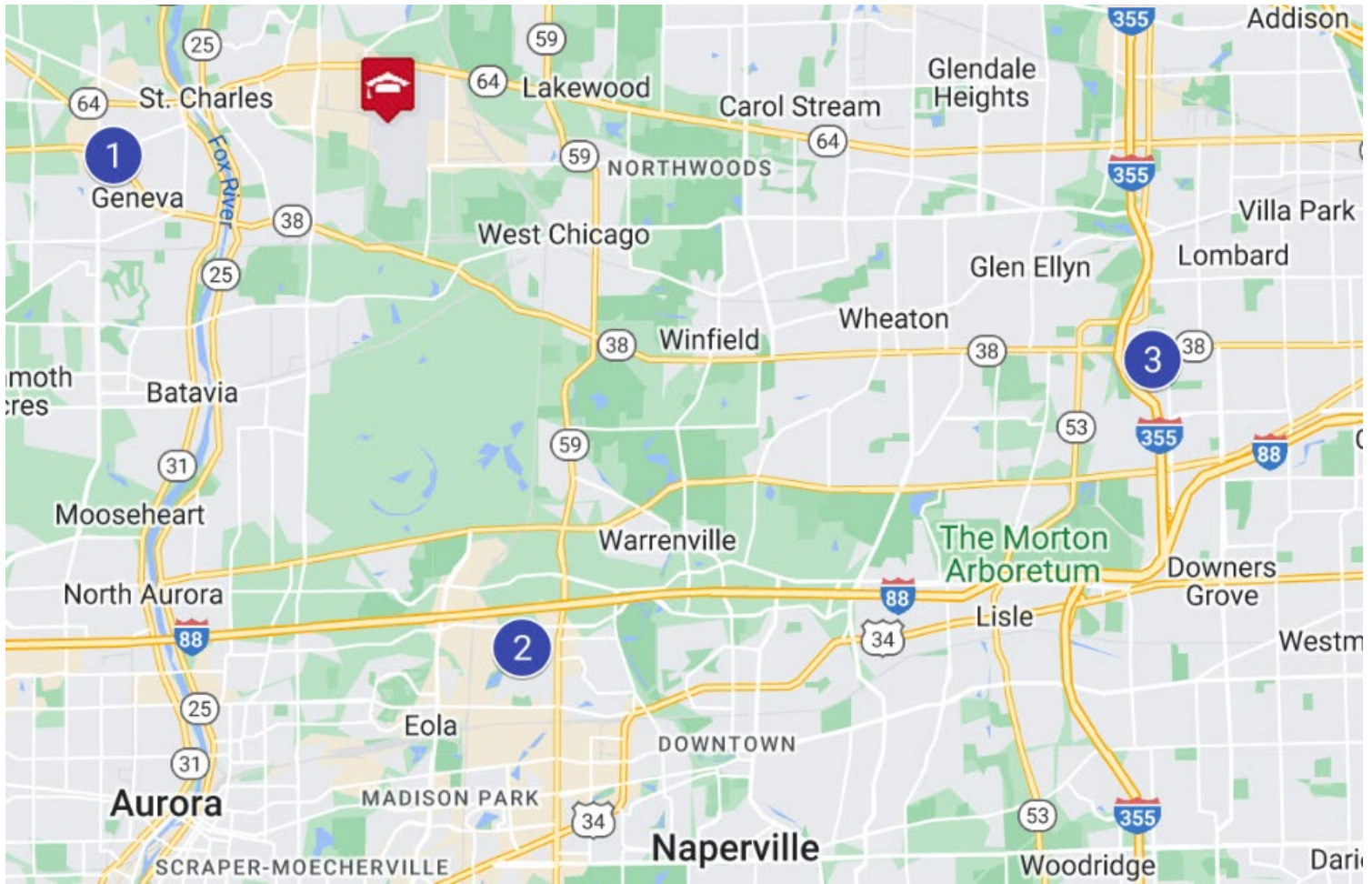
WEST CHICAGO, IL

APPLY TODAY!

1-800-866-8346

RATES GOOD FROM 4/1/25 THRU 6/30/25





CHS Property Map for Illinois Aviation Academy

	Apartment Community	Pricing Group	Distance to Campus
1	The Reserve at Prairie Creek	Premium-Shared	6.7 miles
2	Fifteen 98	Basic: Shared Premium: Private	11 miles
3	International Village	Premium - Shared	16.2 miles



ILLINOISAVIATION