

Summary of Housing Options



Auguste Escoffier School of Culinary Arts Boulder, CO Campus

▼ Shared Apartment Student Housing

Perfect for students on a tight budget - fixed costs

- Flexible, individual leases
- Basic utilities included
- Spacious floor plans
- Several price/amenity packages available
- Roommate matching with fellow students
- Furnished apartments, full size kitchens and appliances
- Transfers available to change apartments or roommates
- Pre screened locations - close to school, near jobs, shopping, and bus lines
- Fun resident life activities (BBQs, pool parties, games and sporting events)

Typical Community Features:

Clubhouse with game room and big screen TV's, swimming pool, on-site courtesy officers, fitness center, basketball, volleyball and tennis courts.

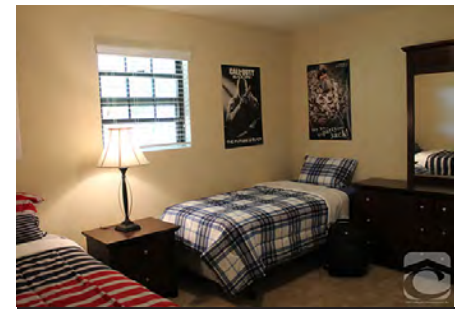


CHS Apartment Example*

▼ Referral Housing

Ideal for married students, families, and students with pets.

- Assistance in leasing directly from apartment communities, or renting your own house
- Apartment communities are pre-screened for best quality and value
- CHS will review your qualifications and suggest communities that best fit your needs.
- Apartments generally do not include furniture or utilities
- Lease lengths may vary
- Roommate assistance available



CHS Apartment Example*

**Complete Your Application
Online Or Contact A CHS
Housing Consultant Today!**

* Above images are example properties only. Apartment communities can change throughout the year. Images above may not reflect your exact property.



COLLEGIATE
HOUSING
SERVICES

1-800-U MOVE IN • www.housingservices.com





HOUSING DETAILS & PRICING

SHARED HOUSING PROGRAM

Lease Type	Individual Student Lease Lease Holder: CHS
Financial Liability	Roommates Individually Each resident is on a separate lease.
Age	18 & Over Under 18 w/parent co-sign.
Credit Qualification	CHS Standard Credit qualifications apply. VA benefits considered as income.
Inspections	Routine
Rules & Regulations	College Housing Consistent w/college programs.
Lease Length	Compliments School Term Short term leases/renewals that accommodate graduation dates may be subject to nominal rate adjustment.
Application Fee	\$50 Non-refundable fee.
Service Fee	\$180 Payment locks rate. Refundable until 30 days before move-in.
Deposits	\$250 or \$500 If needed based upon credit and co-signer.
Rental Rate Lock	Rate is locked upon payment of service fee.

Pricing Below Is Per Bedroom Type – Shared Program Pricing Includes Shared Living Space, Basic Furniture, & Utility Allowance.
Shared student housing is provided in 2 bedroom apartments with 2-4 occupants and 3 bedroom apartments with 3-6 occupants, depending on availability. There are no private bathrooms.

<p>Budget Price Group: This may be an older apartment, typically smaller square footage with 1 bath. Amenities generally include A/C, dishwasher, and onsite laundry facilities.</p>	<p>Shared Bedroom</p> <p>\$999</p> <p>Monthly Rate Per Student</p>	
	<p>Basic Price Group: A mix of amenities and square footage. Some older and some newer communities with varying amenities. Kitchens usually equipped with dishwashers; on-site laundry, A/C, & patio/balcony.</p>	<p>Shared Bedroom</p> <p>\$1,059</p> <p>Monthly Rate Per Student</p>
<p>Moderate Price Group: Typically, a better mix of amenities and square footage for the price. May be newer communities with nice amenities package. Modern kitchens usually equipped w/dishwashers, on-site laundry, A/C, patio/balcony, & pool.</p>		<p>Private Bedroom</p> <p>\$1,489</p> <p>Monthly Rate Per Student</p>
<p>Premium Price Group: Tend to be higher end or newer properties with complete amenities package and larger floorplans. Almost all have modern kitchens equipped with dishwashers & some with built-in microwaves, on-site laundry, A/C, larger closets, patio/balcony, pool, sports courts & more.</p>	<p>Shared Bedroom</p> <p>\$1,189</p> <p>Monthly Rate Per Student</p>	<p>Private Bedroom</p> <p>\$1,679</p> <p>Monthly Rate Per Student</p>

CHS will use its best effort to accommodate all students; however, applications submitted within 30 days of requested move-in dates may be wait-listed until housing can be prepared. Preferences are considered on a first come, first served basis. Placement and/or options in specific communities cannot be guaranteed, as new properties may be substituted to ensure housing availability and their pricing may vary. Move-ins occurring on the 21st of the month or after require a prorated rental amount to be paid at move-in & the first full month's housing payment. Applications are subject to basic credit and criminal background checks.

STUDENT HOUSING INFORMATION FOR:



APPLY TODAY!

1-800-866-8346

RATES GOOD FROM 1/31/25 THRU 3/31/25

Auguste Escoffier School of Culinary Arts Boulder Campus

