







**NASCAR
TECHNICAL
INSTITUTE**

SUMMARY OF HOUSING OPTIONS

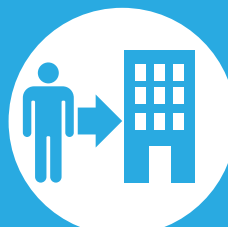
NASCAR Tech - Mooresville, NC Campus

COLLEGIATE HOUSING SERVICES HOUSING FEATURES & OPTIONS	SHARED HOUSING PROGRAM	REFERRAL HOUSING PROGRAM
Apartment Rent	✓ Included in monthly CHS housing payment.	✓ Included Paid directly to apartment community.
Utilities	✓ Included with monthly utility allowance that varies by floor plan.	✗ Not Included
Furniture	✓ Included	✗ Not Included
 Individual Lease Protection	✓ Included	✗ Not Included
 Roommate Coordination	✓ Included	✗ Not Included
 Transferability	✓ Included	✗ Not Included
 Early Lease Cancellation	✓ Included w/notice & 2 month rent cancellation fee.	✗ Not Included
Resident Life Programming	✓ Included	✗ Not Included
Resident Assistants (RAs)	✓ Included	✗ Not Included
Shared & Private Bedrooms	✓ Included Mostly shared bedrooms, fewer private bedroom options.	✓ Included Per apartment regulations.
Overnight Guests Allowed	✗ Not Included Unless 21+ Age Unit.	✓ Included
Co-Ed Allowed	✗ Not Included	✓ Included
Families Allowed	✗ Not Included	✓ Included
Pets Allowed	✗ Not Included	Varies Per apartment regulations.



SHARED HOUSING PROGRAM

Learn more at:
sharedhousing.info



REFERRAL HOUSING PROGRAM

Learn more at
referralhousing.info



**APPLY
FOR HOUSING**

APPLY ONLINE:
[housingservices.com/nascar-technical-institute/
mooresville-nc](http://housingservices.com/nascar-technical-institute/mooresville-nc)



COLLEGIATE
HOUSING
SERVICES




HOUSING DETAILS & PRICING

SHARED HOUSING PROGRAM

REFERRAL HOUSING PROGRAM

Lease Type	Individual Student Lease Lease Holder: CHS	Joint & Several Lease Lease Holder: Apt. Community
Financial Liability	Roommates Individually Each resident is on a separate lease.	Roommates Collectively All residents on one lease.
Age	18 & Over Under 18 w/parent co-sign.	Varies Per apartment regulations.
Credit Qualification	CHS Standard Minimal credit qualifications. VA benefits considered as income.	Varies Typically, monthly income from local employer that equals 3 to 5 times rent.
Inspections	Routine Quarterly, or as needed per request.	As Needed Per apartment's request.
Rules & Regulations	College Housing Consistent w/college programs.	Varies Consistent w/ apt. standards.
Lease Length	Compliments School Term Short term leases/renewals that accommodate graduation dates may be subject to nominal rate adjustment.	Varies Typical lease term is 12 months.
Application Fee	\$50 Non-refundable fee.	Varies Per apartment regulations.
Service Fee	\$180 Payment locks monthly housing rate. Refundable until 30 days before move-in.	Varies Per apartment regulations.
Deposits	\$0 in most cases \$200 if needed based on co-signer credit or employment.	Varies Usually 1 mo. rent w/good credit.
Rental Rate Lock	Rate is locked upon payment of service fee for resident's original lease term.	Varies Per apartment availability.

Pricing Below Is Per Bedroom Type – Shared Program Includes Shared Living Space, Basic Furniture, & A Utility Allowance.

Budget Price Group: This may be an older apartment, typically smaller square footage with 1 bath. Amenities generally include A/C, dishwasher, and onsite laundry facilities.	Shared Bedroom \$759 Monthly Rate Per Student		Average Price Range For Area Apartments In Referral Housing Program Listed Below:
Basic Price Group: A mix of amenities and square footage. Some older and some newer communities with varying amenities. Kitchens usually equipped with dishwashers; on-site laundry, A/C, & patio/balcony.	Shared Bedroom \$779 Monthly Rate Per Student		\$1,580 Average Price 1 Bedroom Apartment Without Utilities.
Moderate Price Group: Typically, a better mix of amenities and square footage for the price. May be newer communities with nice amenities package. Modern kitchens usually equipped w/dishwashers, on-site laundry, A/C, patio/balcony, & pool.	Shared Bedroom \$839 Monthly Rate Per Student	Private Bedroom \$1,009 Monthly Rate Per Student	\$1,861 Average Price 2 Bedroom Apartment Without Utilities.
Premium Price Group: Tend to be higher end or newer properties with complete amenities package and larger floorplans. Almost all have modern kitchens equipped with dishwashers & some with built-in microwaves, on-site laundry, A/C, larger closets, patio/balcony, pool, sports courts & more.	Shared Bedroom \$859 Monthly Rate Per Student	Private Bedroom \$1,089 Monthly Rate Per Student LIMITED AVAILABILITY	\$1,990 Average Price 3 Bedroom Apartment Without Utilities.
Premium PLUS Price Group: Tend to be newer community, close proximity to the school. Modern kitchens; central air, patio/balcony, swimming pool, & more.	Shared Bedroom \$889 Monthly Rate Per Student	Private Bedroom \$1,119 Monthly Rate Per Student LIMITED AVAILABILITY	

Garages are available at many CHS communities with limited availability. Prices vary by community. Please call us for details. Please be aware that most communities require an additional property application to be completed. CHS will notify each resident should that become necessary, upon placement. CHS will use its best effort to accommodate all students; however, applications submitted within 30 days of requested move-in dates may be wait-listed until housing can be prepared. Preferences are considered on a first come, first served basis. Placement and/or options in specific communities cannot be guaranteed, as new properties may be substituted to ensure housing availability and their pricing may vary. Move-ins occurring on the 21st of the month or after require a prorated rental amount to be paid at move-in & the first full month's housing payment. Applications are subject to basic credit and criminal background checks. Additional background checks may apply for certain properties.

STUDENT HOUSING INFORMATION FOR:



MOORESVILLE, NC

APPLY TODAY!

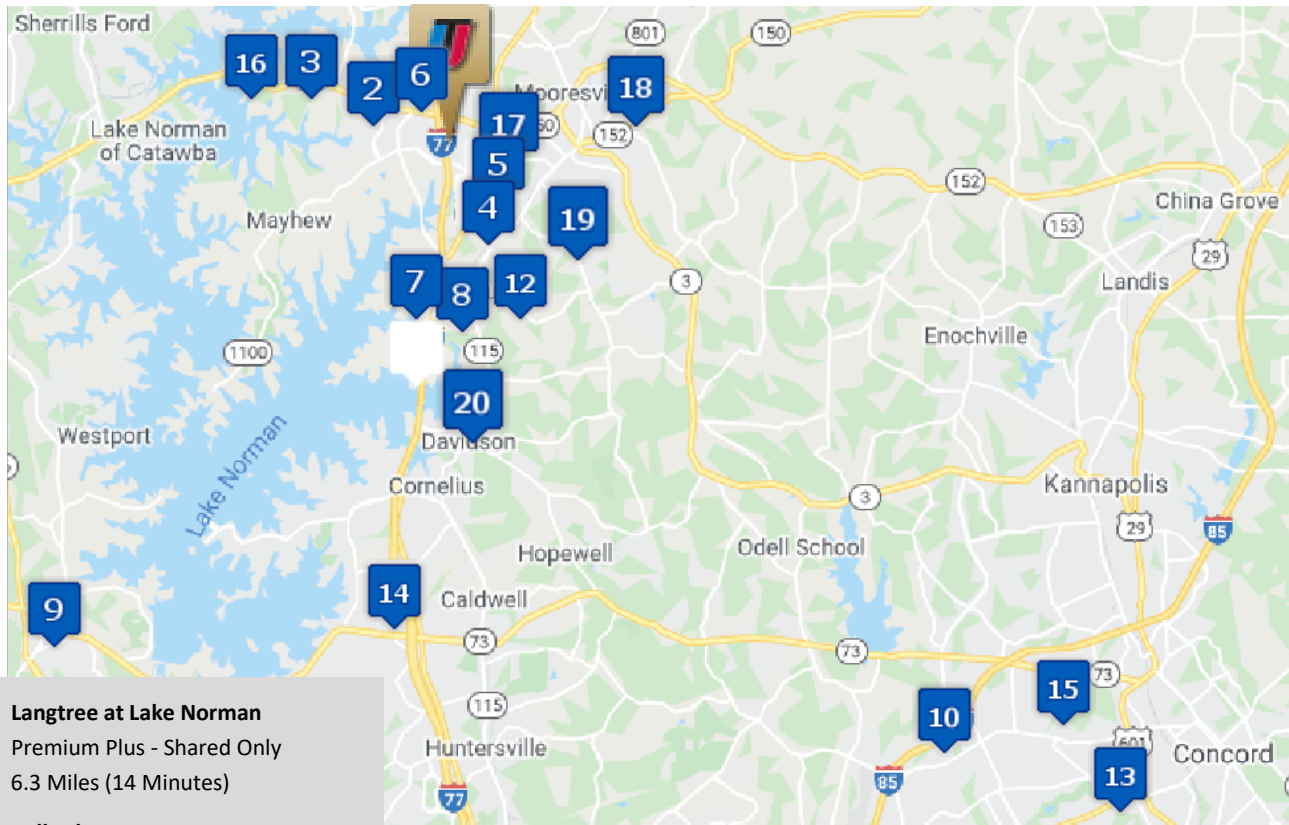
1-800-866-8346

RATES GOOD FROM 7/1/24 THRU 9/30/24



NASCAR Technical Institute

220 Byers Creek Rd, Mooresville, NC 28117



1. **Langtree at Lake Norman**

Premium Plus - Shared Only
6.3 Miles (14 Minutes)

2. **Bell Lake Norman**

Moderate - Shared
Premium Plus - Private
3.2 miles (7 Minutes)

3. **Palisades at Waters Edge**

Premium - Shared
Premium Plus - Private
4.1 Miles (9 minutes)

4. **Avana Lake Norman**

Premium - Shared/Private
4 miles (8 minutes)

5. **Abberly Green**

Premium Plus - Shared/Private
3.8 miles (9 minutes)

6. **Avana Landing**

Basic- Shared
Premium Plus - Private
3 miles (7 minutes)

7. **Palisades at Alcove**

Premium Plus - Shared/Private
6.1 Miles (13 Minutes)

8. **Legacy Lake Norman**

Premium Plus - Shared/Private
5.6 Miles (13 Minutes)

9. **Riverwalk Apartments**

Premium - Shared
Moderate - Private
21.5 Miles - (39 Minutes)

10. **Century Afton Village**

Moderate - Shared
Premium Plus - Private
34 Miles (31 minutes)

11. **Apartments @ Eleven 240**

Premium - Shared Only
20.3 Miles (28 minutes)

12. **Continuum 115**

Premium - Shared
Premium Plus - Private
5.7 Miles (12 minutes)

13. **The Cloisters of Concord**

Basic - Shared
Moderate - Private
35.3 Miles (42 minutes)

14. **Greys Harbor**

Premium Plus - Shared/Private
13.1 Miles (19 minutes)

15. **Seasons at Poplar Tent**

Premium - Shared
Premium Plus - Private
21.6 Miles (39 minutes)

16. **150 West Apartments**

Basic - Shared
Moderate - Private
4.4 Miles (17 minutes)

17. **Country Club Apartments**

Budget - Shared
2.9 Miles (9 minutes)

18. **North Main Village**

Budget - Shared
Moderate - Private
5.3 Miles (14 minutes)

19. **Fieldbrook**

Budget - Shared
Moderate - Private
6.6 Miles (15 minutes)

20. **Davidson Lakeside Apartments**

Budget - Shared
Moderate - Private
9.4 Miles (19 minutes)