







**NASCAR  
TECHNICAL  
INSTITUTE**

# SUMMARY OF HOUSING OPTIONS

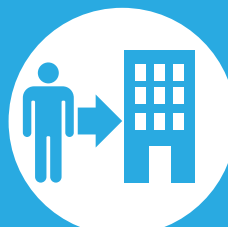
## NASCAR Tech - Mooresville, NC Campus

COLLEGIATE HOUSING SERVICES <b>HOUSING</b> FEATURES & OPTIONS	<b>SHARED</b> HOUSING PROGRAM	<b>REFERRAL</b> HOUSING PROGRAM
Apartment Rent	✓ Included in monthly CHS housing payment.	✓ Included Paid directly to apartment community.
Utilities	✓ Included with monthly utility allowance that varies by floor plan.	✗ Not Included
Furniture	✓ Included	✗ Not Included
 Individual Lease Protection	✓ Included	✗ Not Included
 Roommate Coordination	✓ Included	✗ Not Included
 Transferability	✓ Included	✗ Not Included
 Early Lease Cancellation	✓ Included w/notice & 2 month rent cancellation fee.	✗ Not Included
Resident Life Programming	✓ Included	✗ Not Included
Resident Assistants (RAs)	✓ Included	✗ Not Included
Shared & Private Bedrooms	✓ Included Mostly shared bedrooms, fewer private bedroom options.	✓ Included Per apartment regulations.
Overnight Guests Allowed	✗ Not Included Unless 21+ Age Unit.	✓ Included
Co-Ed Allowed	✗ Not Included	✓ Included
Families Allowed	✗ Not Included	✓ Included
Pets Allowed	✗ Not Included	Varies Per apartment regulations.



### SHARED HOUSING PROGRAM

Learn more at:  
[sharedhousing.info](http://sharedhousing.info)



### REFERRAL HOUSING PROGRAM

Learn more at  
[referralhousing.info](http://referralhousing.info)



**APPLY**  
FOR HOUSING

**APPLY ONLINE:**  
[housingservices.com/nascar-technical-institute/  
mooresville-nc](http://housingservices.com/nascar-technical-institute/mooresville-nc)



COLLEGIATE  
HOUSING  
SERVICES

## HOUSING DETAILS & PRICING

## SHARED HOUSING PROGRAM

## REFERRAL HOUSING PROGRAM

Lease Type	<b>Individual Student Lease</b> Lease Holder: CHS	<b>Joint &amp; Several Lease</b> Lease Holder: Apt. Community
Financial Liability	<b>Roommates Individually</b> Each resident is on a separate lease.	<b>Roommates Collectively</b> All residents on one lease.
Age	<b>18 &amp; Over</b> Under 18 w/parent co-sign.	<b>Varies</b> Per apartment regulations.
Credit Qualification	<b>CHS Standard</b> Minimal credit qualifications. VA benefits considered as income.	<b>Varies</b> Typically, monthly income from local employer that equals 3 to 5 times rent.
Inspections	<b>Routine</b> Quarterly, or as needed per request.	<b>As Needed</b> Per apartment's request.
Rules & Regulations	<b>College Housing</b> Consistent w/college programs.	<b>Varies</b> Consistent w/ apt. standards.
Lease Length	<b>Compliments School Term</b> Short term leases/renewals that accommodate graduation dates may be subject to nominal rate adjustment.	<b>Varies</b> Typical lease term is 12 months.
Application Fee	<b>\$50</b> Non-refundable fee.	<b>Varies</b> Per apartment regulations.
Service Fee	<b>\$180</b> Payment locks monthly housing rate. Refundable until 30 days before move-in.	<b>Varies</b> Per apartment regulations.
Deposits	<b>\$0 in most cases</b> \$200 if needed based on co-signer credit or employment.	<b>Varies</b> Usually 1 mo. rent w/good credit.
Rental Rate Lock	Rate is locked upon payment of service fee for resident's original lease term.	<b>Varies</b> Per apartment availability.

**Pricing Below Is Per Bedroom Type – Shared Program Includes Shared Living Space, Basic Furniture, & A Utility Allowance.**

			Average Price Range For Area Apartments In Referral Housing Program Listed Below:
<b>Basic Price Group:</b> A mix of amenities and square footage. Some older and some newer communities with varying amenities. Kitchens usually equipped with dishwashers; on-site laundry, A/C, & patio/balcony.	<b>Shared Bedroom</b> <b>\$759</b> Monthly Rate Per Student		<b>\$1,580</b> Average Price 1 Bedroom Apartment Without Utilities.
<b>Moderate Price Group:</b> Typically, a better mix of amenities and square footage for the price. May be newer communities with nice amenities package. Modern kitchens usually equipped w/dishwashers, on-site laundry, A/C, patio/balcony, & pool.	<b>Shared Bedroom</b> <b>\$779</b> Monthly Rate Per Student	<b>Private Bedroom</b> <b>\$1,009</b> Monthly Rate Per Student	<b>\$1,861</b> Average Price 2 Bedroom Apartment Without Utilities.
<b>Premium Price Group:</b> Tend to be higher end or newer properties with complete amenities package and larger floorplans. Almost all have modern kitchens equipped with dishwashers & some with built-in microwaves, on-site laundry, A/C, larger closets, patio/balcony, pool, sports courts & more.	<b>Shared Bedroom</b> <b>\$839</b> Monthly Rate Per Student	<b>Private Bedroom</b> <b>\$1,089</b> Monthly Rate Per Student LIMITED AVAILABILITY	<b>\$1,990</b> Average Price 3 Bedroom Apartment Without Utilities.
<b>Premium PLUS Price Group:</b> Tend to be newer community, close proximity to the school. Modern kitchens; central air, patio/balcony, swimming pool, & more.	<b>Shared Bedroom</b> <b>\$859</b> Monthly Rate Per Student	<b>Private Bedroom</b> <b>\$1,119</b> Monthly Rate Per Student LIMITED AVAILABILITY	

Garages are available at many CHS communities with limited availability. Prices vary by community. Please call us for details. Please be aware that most communities require an additional property application to be completed. CHS will notify each resident should that become necessary, upon placement. CHS will use its best effort to accommodate all students; however, applications submitted within 30 days of requested move-in dates may be wait-listed until housing can be prepared. Preferences are considered on a first come, first served basis. Placement and/or options in specific communities cannot be guaranteed, as new properties may be substituted to ensure housing availability and their pricing may vary. Move-ins occurring on the 21st of the month or after require a prorated rental amount to be paid at move-in & the first full month's housing payment. Applications are subject to basic credit and criminal background checks. Additional background checks may apply for certain properties.

STUDENT HOUSING INFORMATION FOR:



MOORESVILLE, NC

**APPLY TODAY!**

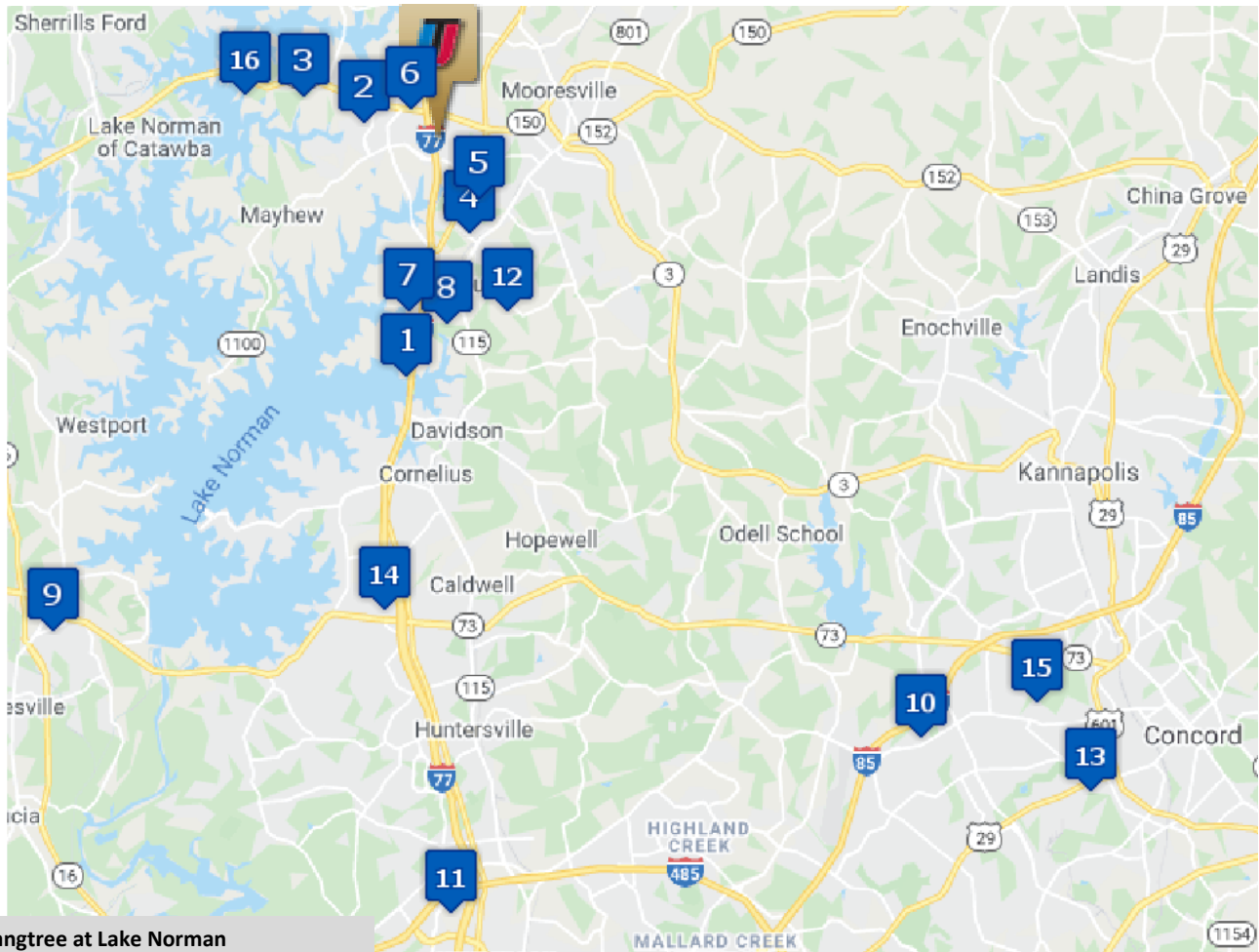
1-800-866-8346

RATES GOOD FROM 2/1/24 THRU 3/31/24



# NASCAR Technical Institute

220 Byers Creek Rd, Mooresville, NC 28117



1. **Langtree at Lake Norman**

Premium Plus - Shared Only  
6.3 Miles (14 Minutes)

2. **Bell Lake Norman**

Moderate - Shared  
Premium - Private  
3.2 miles (7 Minutes)

3. **Palisades at Waters Edge**

Moderate - Shared  
Premium - Private  
4.1 Miles (9 minutes)

4. **Avana Lake Norman**

Premium - Shared  
Premium Plus - Private  
4 miles (8 minutes)

5. **Abberly Green**

Premium Plus - Shared/Private  
3.8 miles (9 minutes)

6. **Avana Landing**

Basic- Shared  
Premium - Private  
3 miles (7 minutes)

7. **Palisades at Alcove**

Premium Plus - Shared/Private  
6.1 Miles (13 Minutes)

8. **Legacy Lake Norman**

Premium - Shared  
Premium Plus - Private  
5.6 Miles (13 Minutes)

9. **Riverwalk Apartments**

Premium - Shared/Private  
21.5 Miles (39 Minutes)

10. **Century Afton Ridge**

Moderate - Shared  
Premium - Private  
34 Miles (31 minutes)

11. **Apartments @ Eleven 240**

Premium Plus - Shared Only  
20.3 Miles (28 minutes)

12. **Continuum 115**

Premium - Shared  
Premium Plus - Private  
5.7 Miles (12 minutes)

13. **The Cloisters of Concord**

Basic - Shared  
Moderate - Private  
35.3 Miles (42 minutes)

14. **Greys Harbor**

Premium Plus - Shared/Private  
13.1 Miles (19 minutes)

15. **Seasons at Poplar Tent**

Premium - Shared  
Premium Plus - Private  
21.6 Miles (39 minutes)

16. **150 West Apartments**

Moderate - Shared  
Premium - Private  
4.4 Miles (17 minutes)