








# SUMMARY OF HOUSING OPTIONS

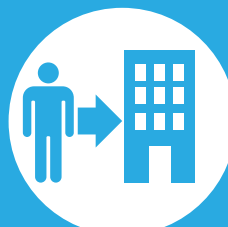
## College of DuPage Athletics

 COLLEGIATE HOUSING SERVICES         HOUSING FEATURES & OPTIONS	SHARED HOUSING PROGRAM	REFERRAL HOUSING PROGRAM
Apartment Rent	✓ Included in monthly CHS housing payment.	✓ Included Paid directly to apartment community.
Utilities	✓ Included with monthly utility allowance that varies by floor plan.	✗ Not Included
Furniture	✓ Included	✗ Not Included
 Individual Lease Protection	✓ Included	✗ Not Included
 Roommate Coordination	✓ Included	✗ Not Included
 Transferability	✓ Included	✗ Not Included
 Early Lease Cancellation	✓ Included w/notice & 2 month rent cancellation fee.	✗ Not Included
Resident Life Programming	✓ Included	✗ Not Included
Resident Assistants (RAs)	✓ Included	✗ Not Included
Shared & Private Bedrooms	✓ Included Mostly shared bedrooms, fewer private bedroom options.	✓ Included Per apartment regulations.
Overnight Guests Allowed	✗ Not Included Unless 21+ Age Unit.	✓ Included
Co-Ed Allowed	✗ Not Included	✓ Included
Families Allowed	✗ Not Included	✓ Included
Pets Allowed	✗ Not Included	Varies Per apartment regulations.



### SHARED HOUSING PROGRAM

Learn more at:  
[sharedhousing.info](http://sharedhousing.info)



### REFERRAL HOUSING PROGRAM

Learn more at  
[referralhousing.info](http://referralhousing.info)



## APPLY FOR HOUSING

**APPLY ONLINE:**  
[housing-services.com/dupage-county-colleges/](http://housing-services.com/dupage-county-colleges/)



COLLEGIATE  
HOUSING  
SERVICES

## HOUSING DETAILS & PRICING

## SHARED HOUSING PROGRAM

Lease Type

**Individual Student Lease**

Lease Holder: CHS

Financial Liability

**Roommates Individually**

Each resident is on a separate lease.

Age

**18 & Over**

Under 18 w/parent co-sign.

Credit Qualification

**CHS Standard**

Credit qualifications apply.  
VA benefits considered as income.

Inspections

**Routine**

Rules & Regulations

**College Housing**

Consistent w/college programs.

Lease Length

**12 Months**

Short term leases/renewals that accommodate graduation dates may be subject to nominal rate adjustment.

Application Fee

**\$50**

Non-refundable fee.

Service Fee

**\$200**

Payment locks rate, Refundable until 30 days before move-in.

Deposits

**\$250 or \$250**

Based upon credit and co-signer.

Rental Rate Lock

Rate is locked upon payment of service fee.

**Pricing Below Is Per Bedroom Type – Shared Program Pricing Includes Shared Living Space, Basic Furniture, & a Utility Allowance.**

**Budget Price Group:** This may be an older apartment, typically smaller square footage with 1 bath. Amenities generally include A/C, dishwasher, and onsite laundry facilities.

**Shared Bedroom**

**\$809**

Monthly Rate Per Student



**Basic Price Group:** A mix of amenities and square footage. Some older and some newer communities with varying amenities. Kitchens usually equipped with dishwashers; on-site laundry, A/C, & patio/balcony.

**Shared Bedroom**

**\$949**

Monthly Rate Per Student



**Moderate Price Group:** Typically, a better mix of amenities and square footage for the price. May be newer communities with nice amenities package. Modern kitchens usually equipped w/dishwashers, on-site laundry, A/C, patio/balcony, & pool.

**Shared Bedroom**

**\$979**

Monthly Rate Per Student



**Premium Price Group:** Tend to be higher end or newer properties with complete amenities package and larger floor plans. Almost all have modern kitchens equipped with dishwashers & some with built-in microwaves, on-site laundry, A/C, larger closets, patio/balcony, pool, sports courts & more.

**Shared Bedroom**

**\$1,019**

Monthly Rate Per Student

**Private Bedroom**

**\$1,219**

Monthly Rate Per Student

**Premium PLUS Price Group:** Tend to be newer community, close proximity to the school. Modern kitchens; central air, patio/balcony, swimming pool, & more.

**Shared Bedroom**

**\$1,109**

Monthly Rate Per Student

**Private Bedroom**

**\$1,299**

Monthly Rate Per Student

CHS will use its best effort to accommodate all students; however, applications submitted within 30 days of requested move-in dates may be wait-listed until housing can be prepared. Preferences are considered on a first come, first served basis. Placement and/or options in specific communities cannot be guaranteed, as new properties may be substituted to ensure housing availability and their pricing may vary. Move-ins occurring on the 21<sup>st</sup> of the month or after require a prorated rental amount to be paid at move-in & the first full month's housing payment. Applications are subject to basic credit and criminal background checks.

STUDENT HOUSING INFORMATION FOR:



**APPLY TODAY!**

1-800-866-8346

RATES GOOD FROM 12/1/23 THRU 3/31/24



# College of DuPage

