







# SUMMARY OF HOUSING OPTIONS

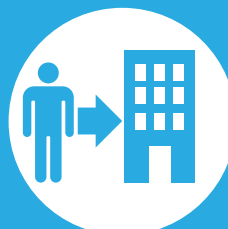
## CDI - Goodyear, AZ Campus

COLLEGIATE HOUSING SERVICES <b>HOUSING</b> FEATURES & OPTIONS	<b>SHARED</b> HOUSING PROGRAM	<b>REFERRAL</b> HOUSING PROGRAM
Apartment Rent	✓ Included in monthly CHS housing payment.	✓ Included Paid directly to apartment community.
Utilities	✓ Included with monthly utility allowance that varies by floorplan.	✗ Not Included
Furniture	✓ Included	✗ Not Included
 Individual Lease Protection	✓ Included	✗ Not Included
 Roommate Coordination	✓ Included	✗ Not Included
 Transferability	✓ Included	✗ Not Included
 Early Lease Cancellation	✓ Included w/notice & 2 month rent cancellation fee.	✗ Not Included
Resident Life Programming	✓ Included	✗ Not Included
Resident Assistants (RAs)	✓ Included	✗ Not Included
Shared & Private Bedrooms	✓ Included Mostly shared bedrooms, fewer private bedroom options.	✓ Included Per apartment regulations.
Overnight Guests Allowed	✗ Not Included	✓ Included
Co-Ed Allowed	✗ Not Included	✓ Included
Families Allowed	✗ Not Included	✓ Included
Pets Allowed	✗ Not Included	Varies Per apartment regulations.



### SHARED HOUSING PROGRAM

Learn more at:  
[sharedhousing.info](http://sharedhousing.info)



### REFERRAL HOUSING PROGRAM

Learn more at  
[referralhousing.info](http://referralhousing.info)



## APPLY FOR HOUSING

**APPLY ONLINE:**  
[housingservices.com/cdi/goodyear-az](http://housingservices.com/cdi/goodyear-az)







## SHARED HOUSING PROGRAM

## REFERRAL HOUSING PROGRAM

Lease Type	<b>Individual Student Lease</b> Lease Holder: CHS	<b>Joint &amp; Several Lease</b> Lease Holder: Apt. Community
Financial Liability	<b>Roommates Individually</b> Each resident is on a separate lease.	<b>Roommates Collectively</b> All residents on one lease.
Age	<b>18 &amp; Over</b> Under 18 w/parent co-sign.	<b>Varies</b> Per apartment regulations.
Credit Qualification	<b>CHS Standard</b> Credit qualifications apply. VA benefits considered as income.	<b>Varies</b> Typically monthly income from local employer that equals 3 to 5 times rent.
Inspections	<b>Routine</b>	<b>As Needed</b> Per apartment's request.
Rules & Regulations	<b>College Housing</b> Consistent w/college programs.	<b>Varies</b> Consistent w/ apt. standards.
Lease Length	<b>Compliments School Term</b> Short term leases/renewals that accommodate graduation dates may be subject to nominal rate adjustment.	<b>Varies</b> Typical lease term is 12 months.
Application Fee	<b>\$50</b> Non-refundable fee.	<b>Varies</b> Per apartment regulations.
Service Fee	<b>\$200</b> Payment locks rate, Refundable until 30 days before move-in.	<b>Varies</b> Per apartment regulations.
Deposits	<b>\$0 or \$150 or \$250</b> If needed based upon credit and co-signer.	<b>Varies</b> Usually 1 mo. rent w/good credit.
Rental Rate Lock	Rate is locked upon payment of service fee for resident's original lease term.	<b>Varies</b> Per apartment availability.

**Pricing Below Is Per Bedroom Type – Shared Program Pricing Includes Shared Living Space, Basic Furniture, & a Utility Allowance.**

			Average Price For Area Apartments In Referral Housing Program Listed Below:
			<b>\$1,402</b> Average Price 1 Bedroom Apartment Without Utilities or Furniture.
<b>Moderate Price Group:</b> Typically, a better mix of amenities and square footage for the price. May be newer communities with nice amenities package. Modern kitchens usually equipped w/dishwashers, on-site laundry, A/C, patio/balcony, & pool.	<b>Shared Bedroom</b> <b>879</b> Monthly Rate Per Student	<b>Shared Bedroom</b> <b>\$1,279</b> Monthly Rate Per Student	<b>\$1,696</b> Average Price 2 Bedroom Apartment Without Utilities or Furniture.
<b>Premium Price Group:</b> Tend to be higher end or newer properties with complete amenities package and larger floorplans. Almost all have modern kitchens equipped with dishwashers & some with built-in microwaves, on-site laundry, A/C, larger closets, patio/balcony, pool, sports courts & more.	<b>Shared Bedroom</b> <b>\$909</b> Monthly Rate Per Student	<b>Private Bedroom</b> <b>\$1,329</b> Monthly Rate Per Student	<b>\$2,237</b> Average Price 3 Bedroom Apartment Without Utilities or Furniture.

**Garages are available at many CHS communities with limited availability. Prices vary by community. Please call us for details.** CHS will use its best effort to accommodate all students; however, applications submitted within 30 days of requested move-in dates may be wait-listed until housing can be prepared. Preferences are considered on a first come, first served basis. Placement and/or options in specific communities cannot be guaranteed, as new properties may be substituted to ensure housing availability and their pricing may vary. Move-ins occurring on the 21<sup>st</sup> of the month or after require a prorated rental amount to be paid at move-in & the first full month's housing payment. Applications are subject to basic credit and criminal background checks.



Goodyear, AZ  
**APPLY TODAY!**

1-800-866-8346  
RATES GOOD FROM 12/1/23 THRU 3/31/24



# COMMERCIAL DIVERS INTERNATIONAL

